

HDR 2+



- Advanced tread design for outstanding mileage and superior traction.
- Specialized wear resistant drive axle compound providing high mileage and grip.
- Numerous grip edges and open shoulder tread pattern delivering excellent traction and even tread wear.
- New belt package improves stiffness of crown area. Even wear and higher mileage are the result.
- High-value casing provides the best basis for premium retreadability.



Applications:



Motorway and Regional application
Drive axle – Container,
General Cargo, Tanker

Recommended axle

Technical data and recommended tyre pressures

Article Number	Tyre Sizes	Tread Pattern	Load Speed Index ¹⁾	Ply Rating	TT TL ²⁾	Speed Index & refspeed (km/h)	Tread Depth	Overall Diameter (mm)	Overall Inflated Width (mm)	Recom- mended Rim (inches)	Min Dual Spacing (mm)	Stat. Radius (mm)	Rolling Circum- ference (mm)	Buffing Radius (mm)	Recom- mended Tread Liner Width (mm)	Maximum Load @ Inflation ³⁾			
																Single	Dual	KG	PSI (BAR)
05221090000	11R 22.5	HDR2+	148/145L	16	TL	L 120	22.0	1050	279	8.25	314	489	3200	700	225	6300	123 (8.5)	11600	123 (8.5)
05220250000	295/80R 22.5	HDR2+	152/148M	16	TL	M 130	21.7	1044	290	8.25	326	487	3185	900	250	7100	123 (8.5)	12600	123 (8.5)
05220730000	315/80R 22.5	HDR2+	156/150L	20	TL	L 120	21.7	1076	312	9.00	351	500	3280	800	260	8000	131 (9.0)	13400	123 (8.5)

¹⁾ under preparation

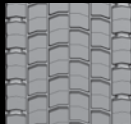
Technical data: "No Liability Assumed!" Data acc. to DIN 7805/4, Wdk Guidelines 134/2, 142/2, 143/14, 143/25

²⁾ TT = Tube Type, TL = Tubeless ³⁾ For tyre pressures of 8.0 bar and over, use valve slit cover plates

ContiTread is offered in HDR 2+ treadliners for suitable Continental casings.



4 grooves: 210mm & 225mm



5 grooves: 240mm, 250mm & 260 mm

Article Number	mm	mm	mm
18205660000	210		3255
18205700000	225		3255
18316500000	240	19.0	3200
18205750000	250		3240
18207620000	260		3300