

# HDR2 / HDR



- Advanced tread design for outstanding mileage and superior traction.
- Specialized wear resistant drive axle compound providing high mileage and grip.
- Numerous grip edges and open shoulder tread pattern delivering excellent traction and even tread wear.
- New belt package improves stiffness of crown area. Even wear and higher mileage are the result.
- High-value casing provides the best basis for premium retreadability.



### Applications:



Motorway and Regional application  
Drive axle – Container,  
General Cargo, Tanker

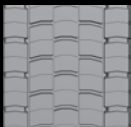
☉ Recommended axle

## Technical data and recommended tyre pressures

Article Number	Tyre Sizes	Tread Pattern	Load Speed Index <sup>1)</sup>	Ply Rating	TT TL <sup>2)</sup>	Speed Index & ref speed (km/h)	Tread Depth	Overall Inflated Diameter (mm)	Overall Inflated Width (mm)	Recom- mended Rim (Inches)	Min Dual Spacing (mm)	Stat. Radius (mm)	Rolling Circum- ference (mm)	Buffing Radius (mm)	Recom- mended Tread Liner Width (mm)	Maximum Load @ Inflation <sup>3)</sup>			
																Single	Dual	KG	PSI (BAR)
05220250000	295/80R 22.5	HDR2	152/148M	16	TL	M 130	21.7	1044	290	8.25	326	487	3185	900	250	7100	123 (8.5)	12600	123 (8.5)
05220730000	315/80R 22.5	HDR2	156/150L	20	TL	L 120	21.7	1076	312	9.00	351	500	3280	800	260	8000	131 (9.0)	13400	123 (8.5)
05753110000	305/70R 22.5	HDR	150/148M	18	TL	M 130	18.1	1000	297	8.25	334	463	3050	-	-	7500	123 (8.5)	13400	123 (8.5)
05221650000	245/70R 19.5	HDR	136/134M	16	TL	M 130	15.3	839	240	6.75	270	389	2560	-	-	4480	123 (8.5)	8480	123 (8.5)
05221660000	285/70R 19.5	HDR	140/138M	16	TL	M 130	15.8	867	254	6.75	286	401	2645	-	-	5000	116 (8.0)	9440	116 (8.0)
05221800000	285/70R 19.5	HDR	145/143M	16	TL	M 130	16.2	895	275	7.50	311	413	2730	-	-	5800	123 (8.5)	10900	123 (8.5)
04755390000	305/70R 19.5	HDR	148/145M	18	TL	M 130	18.1	923	297	8.25	334	424	2815	-	-	6300	123 (8.5)	11600	123 (8.5)

Technical data - "No Liability Assumed" Data acc. to DIN 7809/4, Wolk Guidelines 134/2, 142/2, 143/14, 143/25  
1) Load Index single/twin tyre fitment and speed symbol 2) TT = Tube type, TL = Tubeless 3) For tyre pressures of 8.0 bar and over, use valve silt cover plates

ContiTread is offered in HDR 2 treadliners for suitable Continental casings.



4 grooves: 210mm & 225mm



5 grooves: 240mm, 250mm & 260 mm

Article Number	mm	mm	mm
18205660000	210	19.0	3255
18205700000	225		3255
18316500000	240		3200
18205750000	250		3240
18207620000	260		3300